



DC INVERTER VRF VRF SYSTEM

CMV-X (T3)

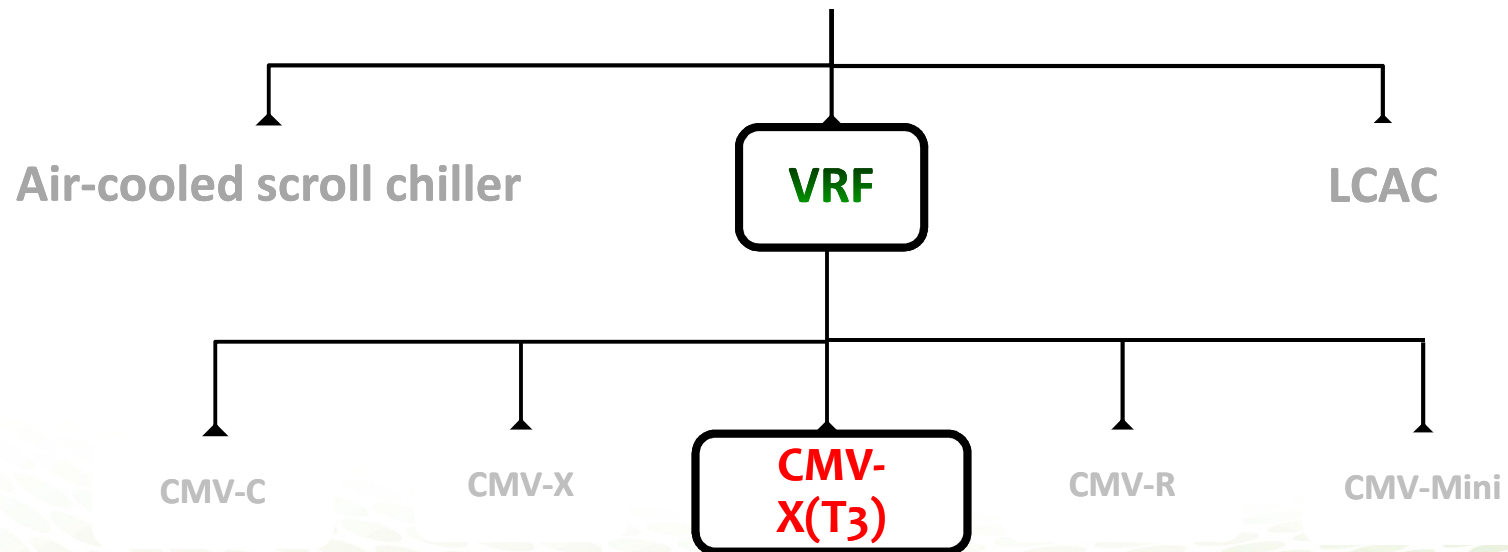


Tropical
Coming in Sep.2017

VRF PRODUCT LINE



CHIGO commercial AC products



R410a, 50Hz/60Hz

BASIC MODULES



8/10HP



12/14/16/18/
20/22HP

Modules can be freely combined
to become larger unit.



Biggest: 88HP

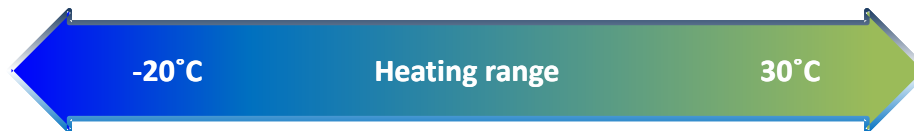
OPERATION RANGE



Designed for tropic district,
outdoor design temperature
is increased to 54°C



Heating operating
temperature is
down to -20°C.



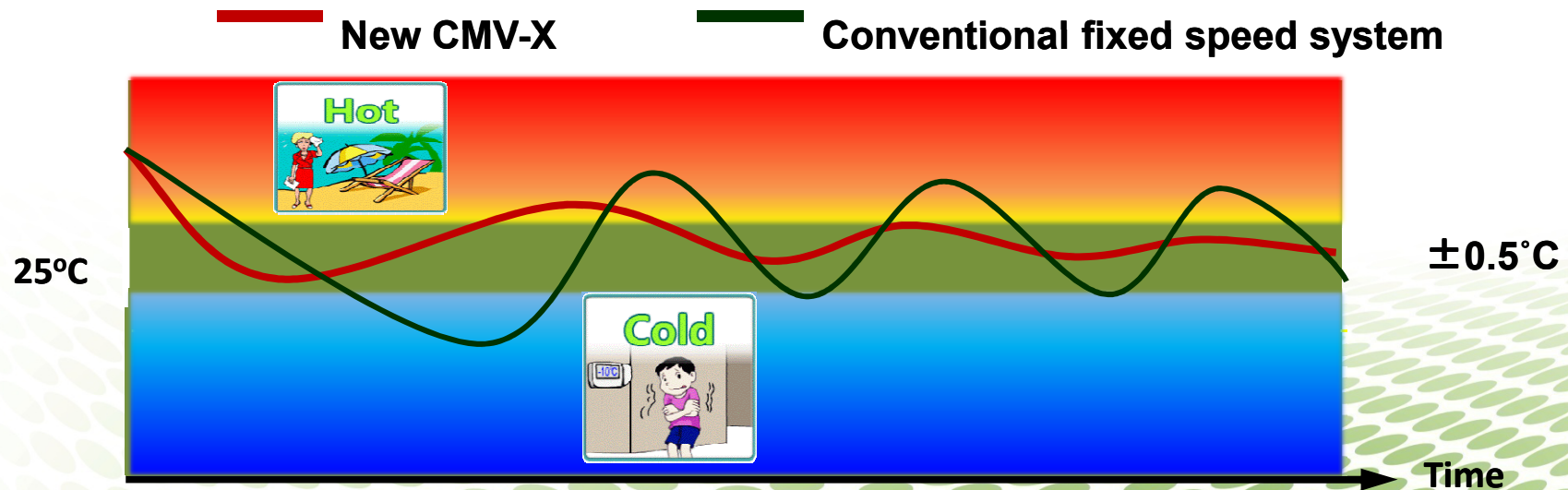
PRECIOUS CONTROL



- Precisely room temperature control by adopting large pulse EXV of both indoor and outdoor unit. Indoor temperature fluctuation can be kept within 0.5°C , offer outstanding comfort ability.

Outstanding Comfort Ability

Room Temperature

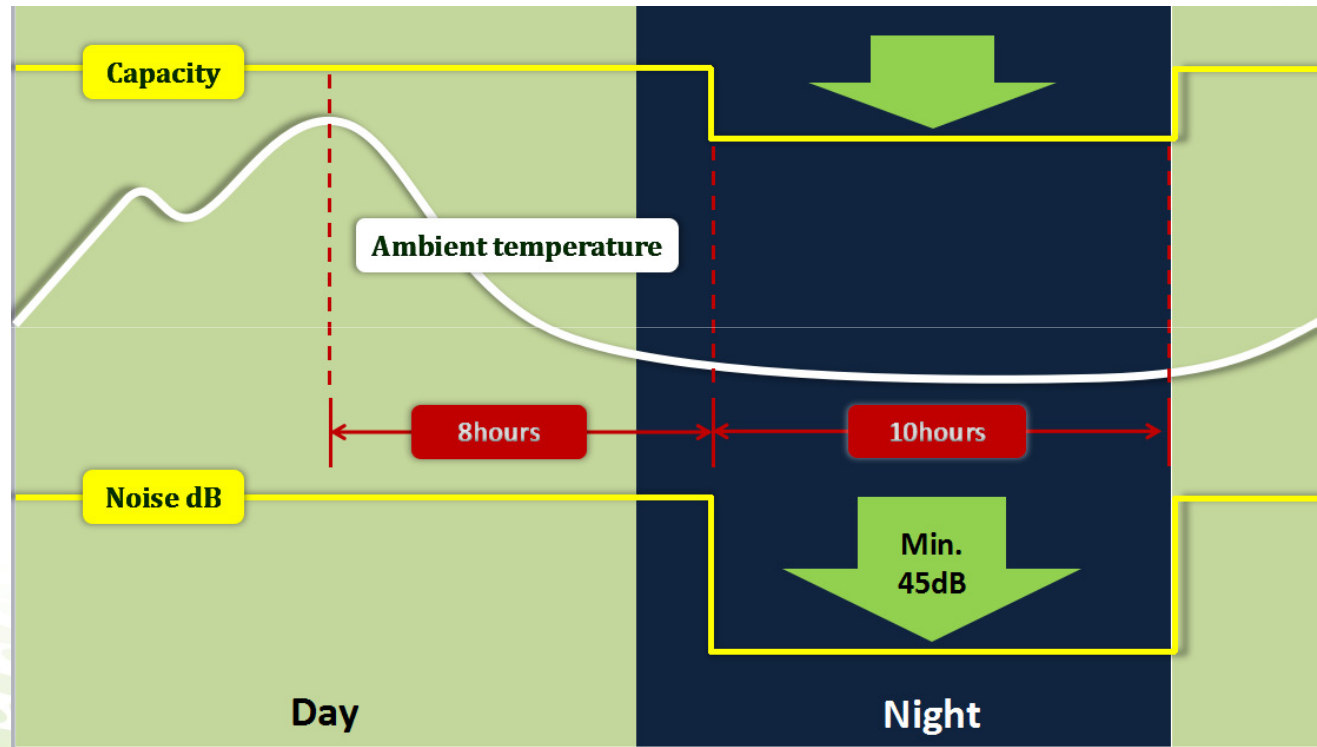


NOISE CONTROL



Intelligence control

System can automatic calculate night time as the biggest temperature showed in day time



ELECTRIC PROTECTION



With assurance of power protection, Chigo VRF can work in hard conditions.



**Unstable
Power supply**



Strong survivability

Power protector



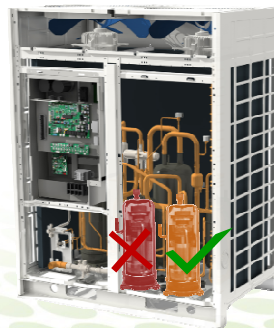
EMERGENCY REACTION



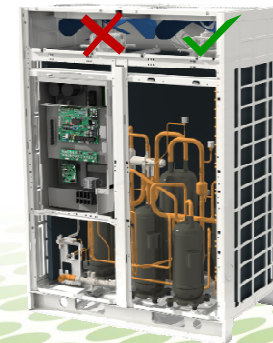
When unpredict broken comes, the other modules can keep running for normal using.



Compressor back up function. When one compressor is failure, the other one can keep running by simply settings.



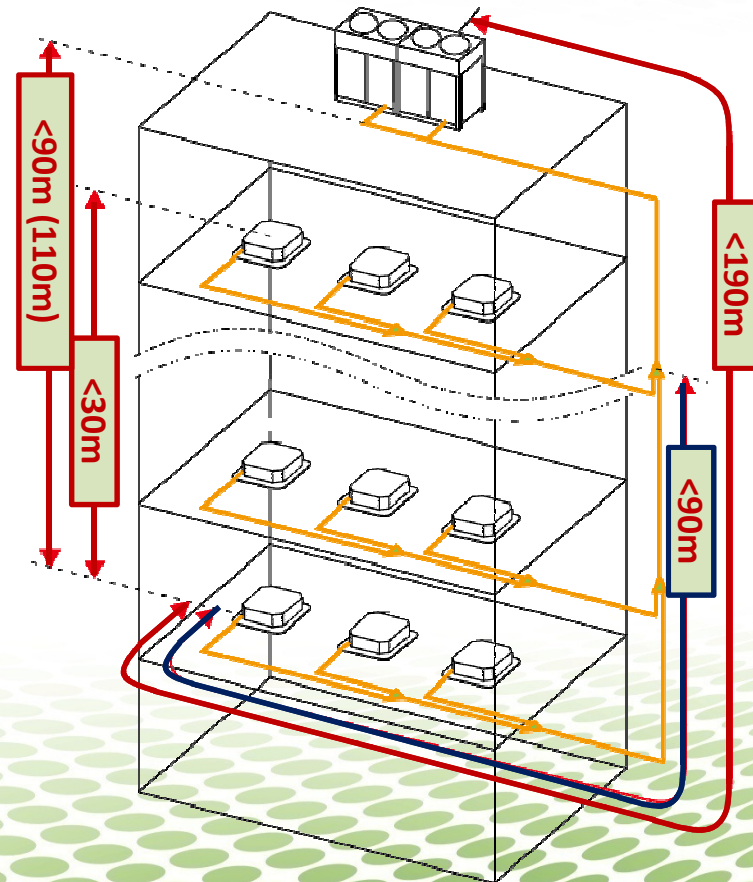
Fan motor back up function. When one fan motor is failure, the other one can keep running by simply settings.



PIPE LENGTH



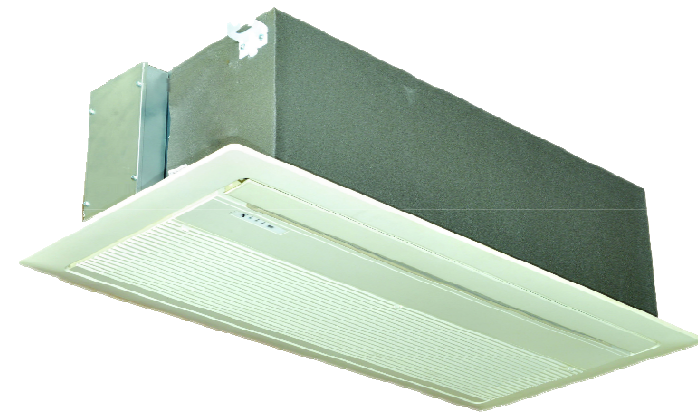
- The total pipe length: 1000 m
- The longest pipe length: 190 / 220m
- Height deference:
 - Outdoor unit above <90m
 - Outdoor unit below <110m
- Height difference between indoor units:
30m
- Length from first indoor distributor to last indoor unit: 90 m
- Communication wire length can be up to 1000m.



ONE WAY CASSETTE



- **Capacity: 2.2kW to 7.1kW**
- **One direction air flow**
- **Built-in drain pump**
- **Slim body 250mm height**



2.2/ 2.8/ 3.6/ 4.5/ 5.6/ 7.1kW

TWO WAY CASSETTE



- **Capacity: 4.5kW to 14kW**
- **Two direction air flow**
- **Built-in drain pump**
- **Slim body 250 mm**



**4.5/ 5.6/
7.1/8/9/10/11.2/12/5/14kW**

FOUR WAY CASSETTE



- **Capacity: 2.2kW to 16kW**
- **Two direction air flow**
- **Built-in drain pump**
- **Slam body 232mm height**



**2.2/ 2.8/ 3.6/
4.5kW**



**5.6/7.1/8/9/10/
11.2/12.5/14/16kW**

W A L L M O U N T E D



- Capacity: 2.2 kW to 7.1 kW
- 2 types can be chosen:
 - ✓ EXV Built-in type
 - ✓ EXV separated type
- Compact size and low noise



Panels



FLOOR CEILING



- **Capacity: 4.5kW to 16kW**
- **Flexible installation, vertical or horizontal**
- **Built-in with EXV**
- **DC motor for optional**



Standard

FLOOR STANDING



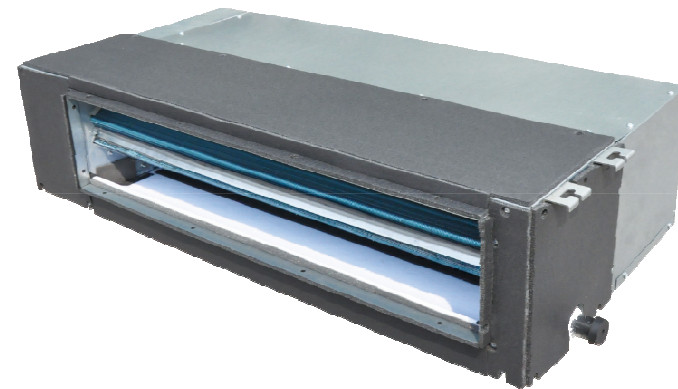
- **Capacity: 4.5kW to 16kW**
- **Easy installation and maintenance**
- **Comfort air supply and low noise**



LOW ESP DUCTED



- External static pressure: 30Pa
- Built-in with EXV
- Low noise and light weight
- Short body, min. 700mm width
- DC motor and built-in water pump for optional



720/35/40/35/7/1R/W

MEDIUM ESP DUCTED



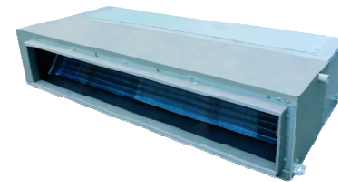
- **Capacity: 7 kW to 15 kW**
- **External static pressure:
70Pa**
- **Built-in with EXV**
- **Flexible installation**
- **2 air return method**



HIGH ESP DUCTED



- Capacity: 7.1 kW to 56 kW
- ESP up to 200Pa
- Built-in with EXV
- Suitable for long distance air supply



7.1 / 8 / 9kW



10 / 12 / 15kW



20 / 25 / 28kW

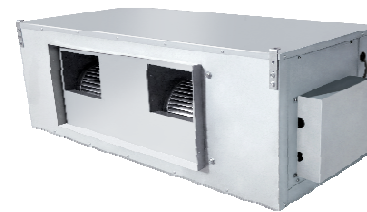


45 / 56 kW

FRESH AIR PROCESSOR



- Full fresh air processing
- Capacity: 14kW to 56 kW
- ESP up to 300Pa, suitable for long distance supply
- Available for wired control and centralized control



14kW



22.4/ 28kW



45/ 56kW

AHU CONNECTION KIT



- **AHU connection kit is an interface to allow 3rd party manufacturer's AHU to connect to Chigo VRF outdoor units**
- **4 basic modules: 5/10/20/30 HP**
- **Can be combined into bigger capacity**



AHU Kit

- ✓ DX type AHU
- ✓ Other supplier's indoor units



CONTROLLER & SOFTWARE



01. Wireless remote controllers

02. Wired controllers

03. Simplify Centralized Controller

04. CMV –NET

05. CMV -SMART

06. BMS Gateway

07. Doctor Kit Pro

08. CMV selection software



REMOTE CONTROLLER



- Temperature setting
- Operation mode setting
- Fan speed setting
- Timer function
- Louver control



Standard



Optional



Optional

WIRED CONTROLLER



- **Bidirectional communication.** Indoor unit's operating parameters (error code, temperature, address) can be inquired and displayed on the controller.
- **Compact design**
- **3" screen with background light**
- **Timer function**
- **Electrical standard dimensions**



Standard

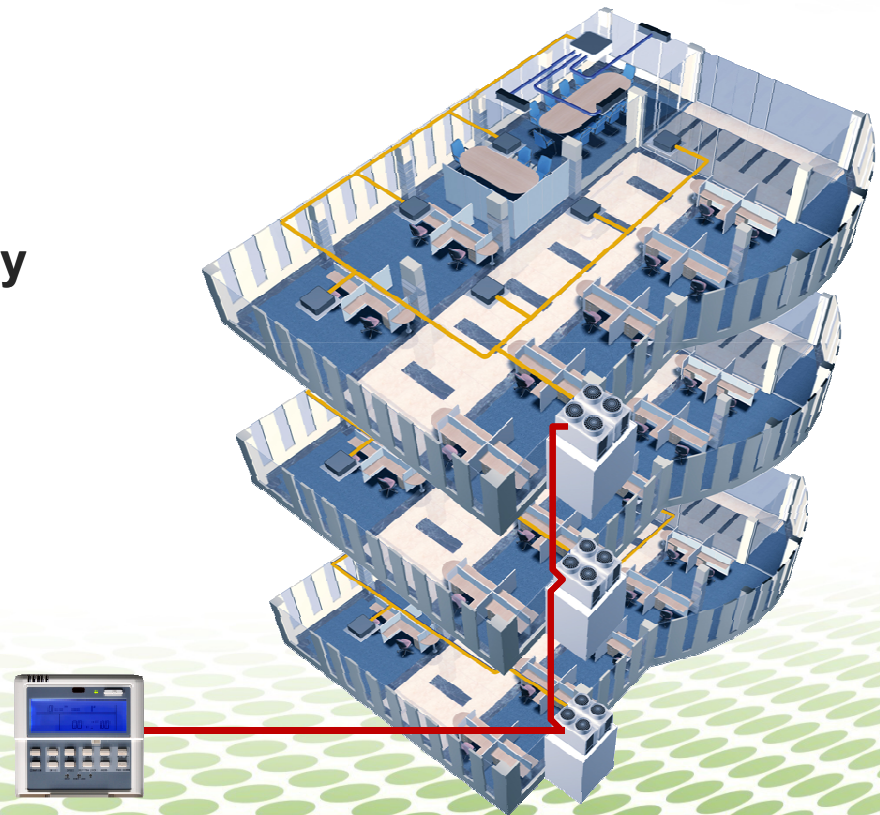


Optional

WIRED CENTROL CONTROLLER



- Operation mode restriction
- Error or protection code display
- Can control single unit or all units together



WIFI CENTROL CONTROLLER

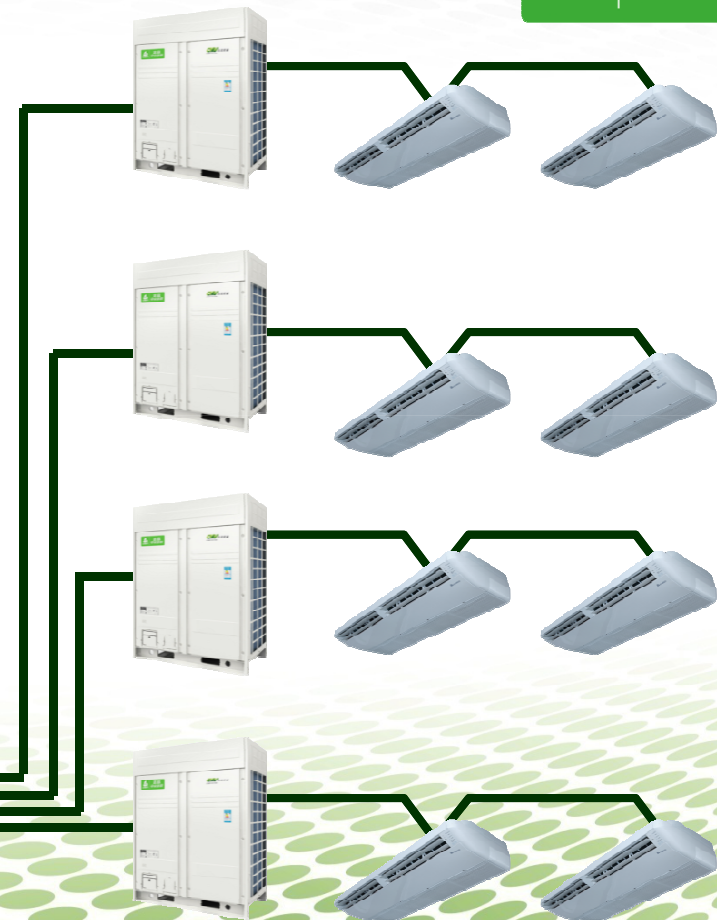
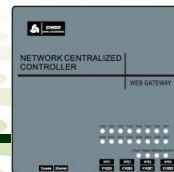


- Available on iOS and Android
- Single unit controller or group control
- Weekly schedule management
- 64 indoor unit can be controlled
- Operation parameter enquiry



GROUP CONTROL

- Billing function
- Operating report output
- Schedule management
- One computer can connected 16 VRF system, maximum 1024 indoor unit
- Muti system control center



BUILD CENTROL CONTROLL



**BMS/BAS
System**



Modbus

Gateways



RS485



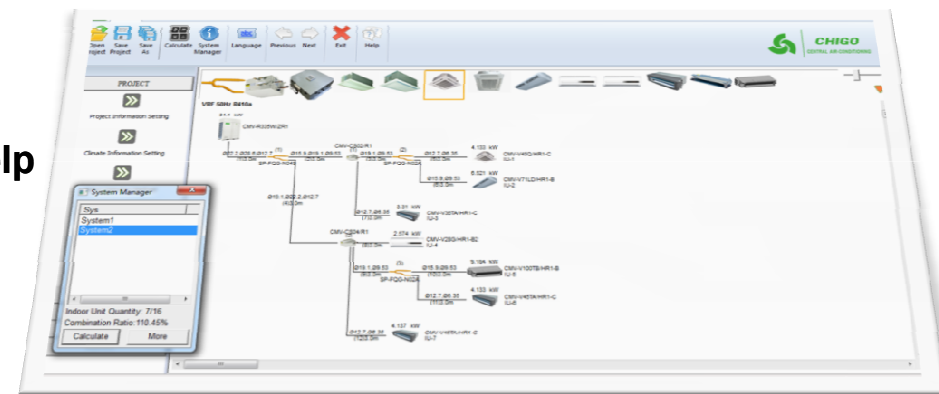
BACnet

- ◆ Honeywell
- ◆ Siemens
- ◆ Johnson controls
- ◆ Etc...

MONITOR SOFTWARE



- Software for VRF project design
- Windows and CAD version software can help to calculate material quantity.
- Humanized interface and easy to learn





Thank you

C H I G O H V A C